



THE 7-FIGURE PORTFOLIO: PART II

Millionaire's Trading Club 2022



THE REAL WORLD

6 Steps Redux

menu

ny

stock

6 Steps Redux

Chart

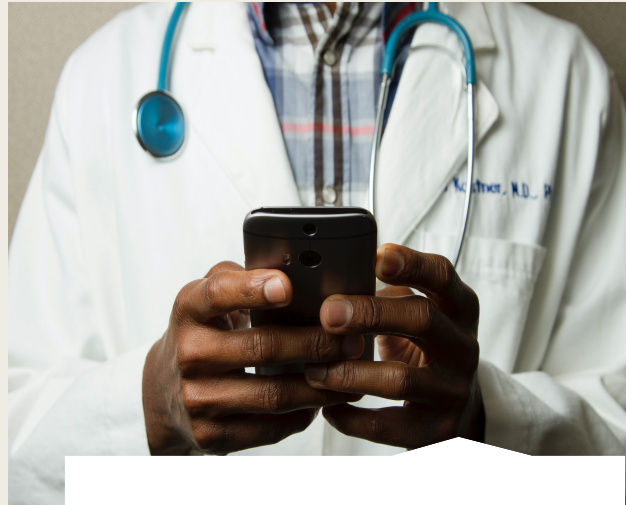
Charts

m

Trends: It's All About Precision



World

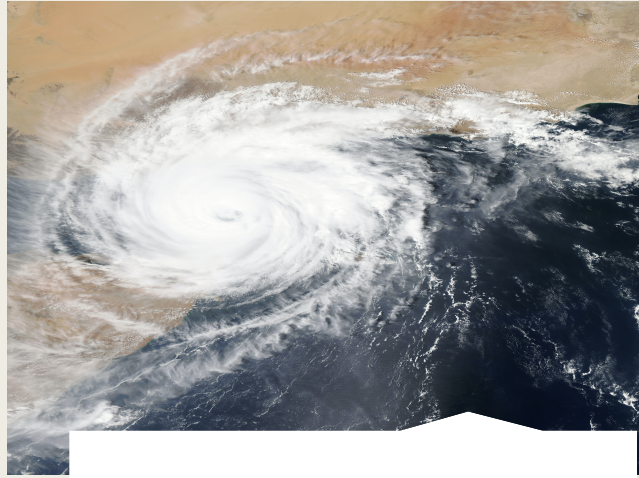


Medicine



The New Frugal

Trends: It's All About Precision



Change



Best in Class



iWorld



Personalized Medicine

A close-up photograph of a doctor's hands holding a black smartphone. The doctor is wearing a white lab coat over a blue and white plaid shirt. A blue stethoscope is draped around their neck. The text 'Personalized Medicine' is overlaid in a large, black, sans-serif font across the center of the image. The background is slightly blurred, focusing attention on the hands and the phone.

The New Frugal



A satellite image of a tropical cyclone, showing a large, swirling cloud system over a dark blue ocean. The cyclone's eye is visible as a bright white center. The surrounding clouds are white and dense, contrasting with the dark blue of the water. The image is taken from a high angle, looking down at the storm.

Climate Change



Best in Class

Goals and Pods



TRADE TACTICS/
MANAGEMENT
DEPEND ON RISK
TOLERANCE



CHARTS AND
PREMIUMS ARE
IMPORTANT TOO



YOU CANNOT
TIME THE
MARKET, BUT
YOU CAN BE
READY TO TRADE
IT

Trading Tactics

Are NOT about one-day trading; they are about **5-year** trading.

Are NOT about portfolio maximization; they are about portfolio **optimization**.

A photograph of a graduation ceremony. In the foreground, a graduate in a black cap and gown with a blue and yellow stole is seen from behind. Other graduates and guests are visible in the background on a grassy area near a brick building.

Life Questions

A Recent Conversation





Cash Withdrawal Pod

- Sell well out-of-the-money (OTM) puts
- Buy shares and sell slightly OTM calls
- Silly bull put spreads



Cash Reinvestment Pod

- LEAP call spreads with protective puts
- Buy shares and sell OTM calls; buy protective puts ahead of earnings
- Puts
- Silly puts



Appreciation Pod

- LEAP call spreads with well OTM calls that pay for 12-month protective puts
- Buy shares and sell OTM calls, buying protective puts around earnings



Forever Pod

- LEAPS
- Monthly calls at least 10% OTM
- Weekly puts and calls (never rolled)



Speculative Pod

- Weekly bull put spreads -- always closed, i.e., no rolling
- Buy shares of very high-beta stocks and sell monthly calls at least 15% OTM



A 7-Figure Portfolio

i.e., \$1 Million

- Target annual return = 25% after withdrawals
- \$5k a month cash withdrawal
- Cash above \$5k reinvested
- 35-stock bullpen
- Utilize all tactics

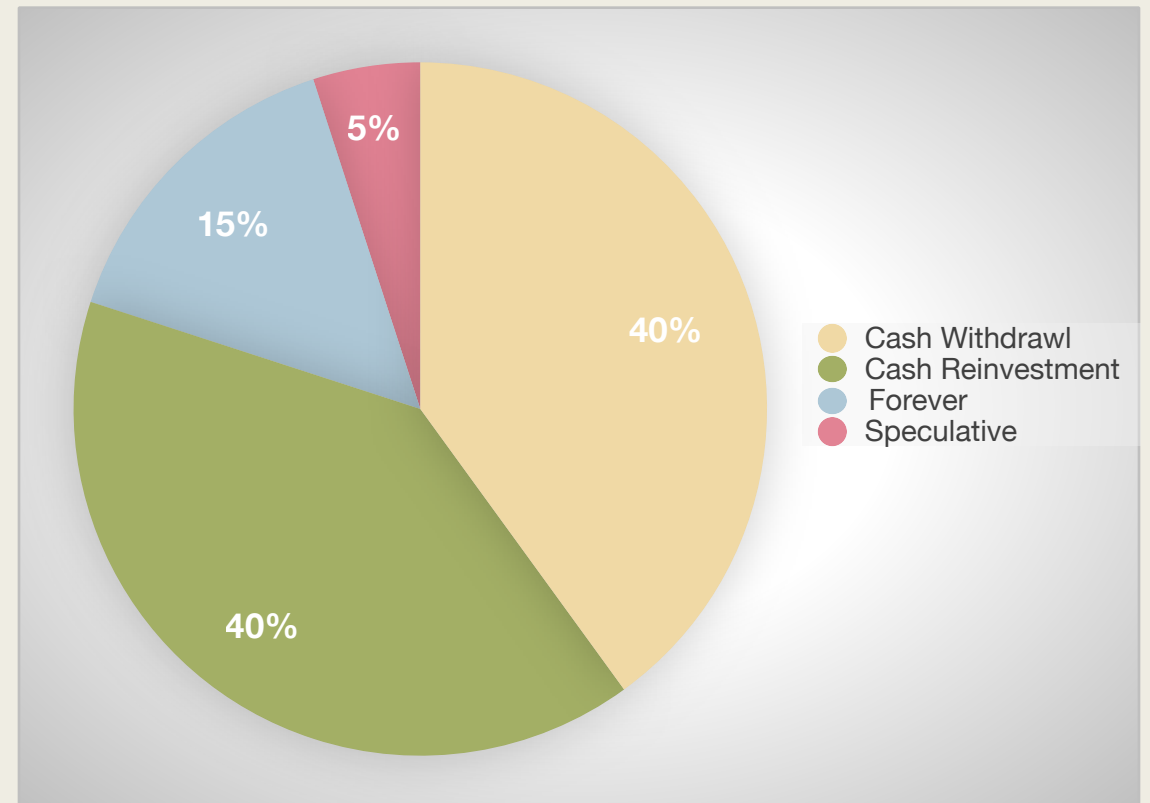
4 Pods for 2022

Cash Withdrawal: 40% or \$400k; 15%-18% annual ROR

Cash Reinvestment: 40% or \$400k; 35% annual ROR with appreciation

Forever: 15% or \$150k; 10% cash ROR, 50% appreciation

Speculative: 5% or \$50k; 100% total ROR



Cash Withdrawal Pod

Company	Sector	Trade Frequency	Weekly Return Potential
Pfizer (PFE)	Biopharma	Weekly	1.1%
SPDR S&P Regional Banking ETF (KRE)	Financials	Weekly	1.2%
General Motors (GM)	Consumer/Climate	Weekly	1.4%
Marvell Technology (MRVL)	Chips/Climate	Weekly	1.7%
CVS Health (CVS)	Health Care	Bi-Weekly	1.0%

Cash Reinvestment Pod

Company	Sector	Trade Frequency	Weekly Return Potential
Apple (AAPL)	Consumer Tech	Weekly	1.2%
Taiwan Semiconductor (TSM)	Chips	Weekly	1.4%
JPMorgan Chase (JPM)	Financials	Bi-Weekly	1.1%
Micron Technology (MU)	Chips	Weekly	1.7%
Crocs (CROX)	Consumer Discretionary	Monthly	1.5%

Forever Pod

Company	Sector	Trade Frequency	Weekly Return Potential
Target (TGT)	Retail	Weekly	1.1%
Blackstone (BX)	Financials	Weekly	1.2%
Google (GOOGL)	Media	Weekly	1.4%
Danaher (DHR)	Life Sciences	Weekly	1.7%
Applied Materials (AMAT)	Chips	Bi-Weekly	1.6%

Speculative Pod

Company	Sector	Trade Frequency	Weekly Return Potential
Roku (ROKU)	Media	Weekly	2.7%
The Trade Desk (TTD)	Ad Tech	Weekly	2.4%
Moderna (MRNA)	Biopharma	Weekly	2.2%
Cheniere Energy (LNG)	Natural Gas	Monthly	1.7%
ZIM Integrated Shipping (ZIM)	Shipping	Weekly	2.2%

Conclusions

- **Foundation:** Goals, the real world, tactics
- **Portfolio Structure:** Pods dictate stocks and tactics
- **Pods:** Built around goals and risk tolerance
- **Tactics:** How to turn a trend into cash